



# The Gogebic Roots Quarterly Newsletter

Volume 4 Issue 1

January 2004

**The Gogebic  
Roots  
Quarterly  
Newsletter**  
Volume 4 Issue 1

---

## **In This Issue**

**The Bessemer  
Historical Society**

**A Finn by Any  
Other Name is  
Still a Finn!**

**Some Old Photos**

**WHAT'S  
HAPPENING  
NOW?**

The Gogebic Roots Quarterly Newsletter is a publication of the Gogebic Range Genealogical Society, Inc. The Newsletter is published quarterly in January, April, July and September. We are located in Ironwood, Michigan, USA. Our mailing address is P.O. Box 23, Ironwood, MI 49938.

Your Newsletter editor is Joe Carlson  
Our website is [www.gogebicroots.com](http://www.gogebicroots.com)

Our website is hosted by



Silverleaf Incorporated.

216 E. Aurora Street  
Ironwood, MI 49938  
(906) 932-7394

Membership dues are based on a calendar year starting with the date of enrollment. The expiration date of your membership is shown on your membership card. If renewal of the dues is not received by the expiration date a reminder is sent. The reason for this is twofold. First and foremost we value your membership and hope you continue to support us. Secondly, our Bylaws state that a member in arrears 30 days after the anniversary date shall be removed from the rolls. Please keep in mind that one reminder only is required in this same section of the Bylaws and is sent in hopes that your membership continues without a lapse. If any member has a question regarding this please feel free to contact us.

Thanks for your continued support.



### **MEMBERS OF THE BESSEMER AREA HISTORICAL SOCIETY AT WORK**

The BAHS is coming together! We will bring you updates as work progresses.

#### **A Finn by Any Other Name is Still a Finn! Submitted by Ed Sandene**

The attached article<sup>1</sup> shows some of the misrepresentations in the newspapers of early years.

There is no such thing as a "Slavic Finn" or a "Scandinavian Finn." Just because a newspaper reporter put this description in the paper doesn't mean it is true. In the 1920's a reporter wrote that the Finns were related to the Mongolian people because of a similar dialect that was found in the Ural mountains. That is like saying everyone that speaks Spanish is from Spain, or English is spoken only by people from England.

The Finnish language belongs to the Finno- Ugric or Uralic languages, and is unrelated to the indo- European languages. The true Finn is dark rather than blond and is not related to the Swedish or other Scandinavian races unless through marriage. It is therefore not really a Scandinavian country although it is often lumped in as such today. There are some Swede-Finn types because of the many years of Swedish rule.

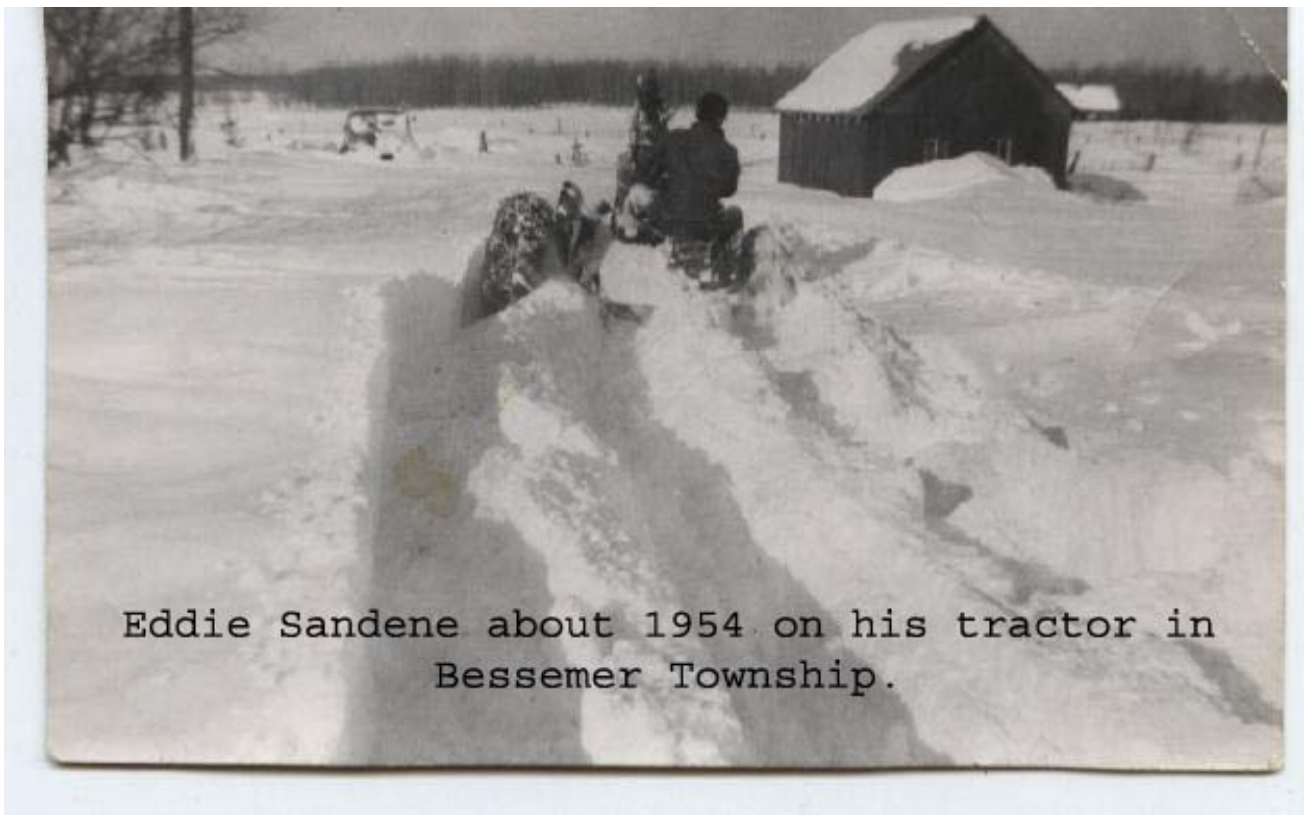
They are not related to the Russian people or any other Slavic types, unless as before through marriage. In the late 1890s and early 1900's when most of the immigration took place, Finland was a Grand Duchy of Russia and was granted a lot of autonomy by the tsar. There was no "trouble" from Russia such as there was beginning in 1917 when the Tsar was overthrown. So I don't understand this supposed screening of communist types as that hadn't happened yet.

<sup>1</sup> The Finnish American Reporter. April 2001, p. 20

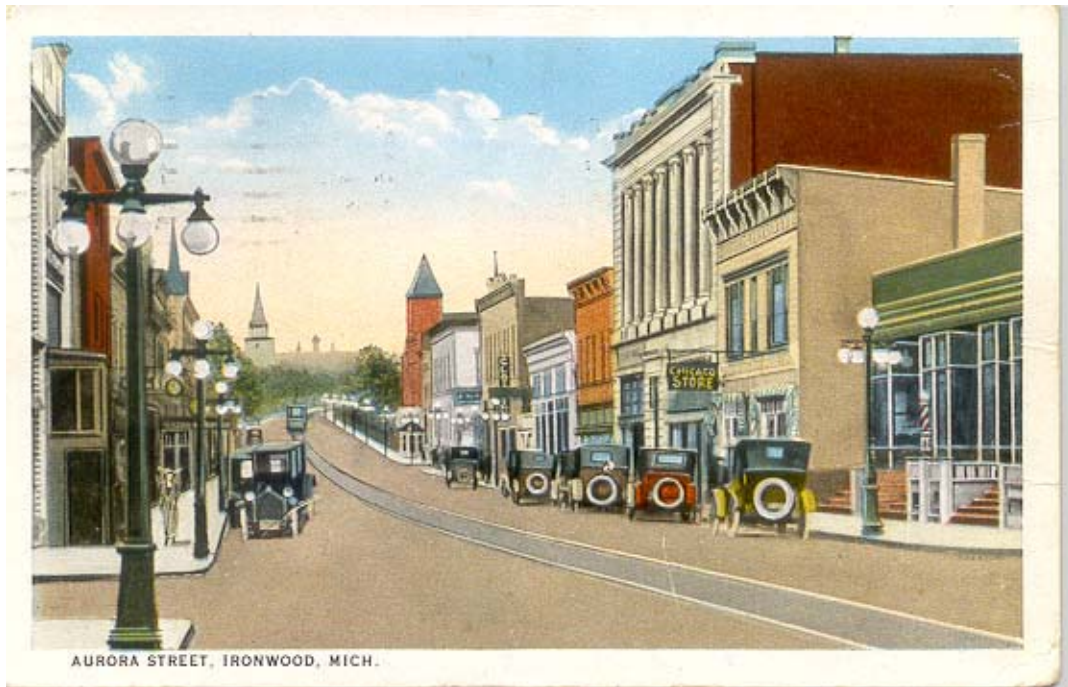
In addition many Finns didn't go through Ellis Island. Many landed in Quebec as my mother did, or Halifax which was the winter port. This was because of the ships owned by the CP RR. Also my father landed in Boston.

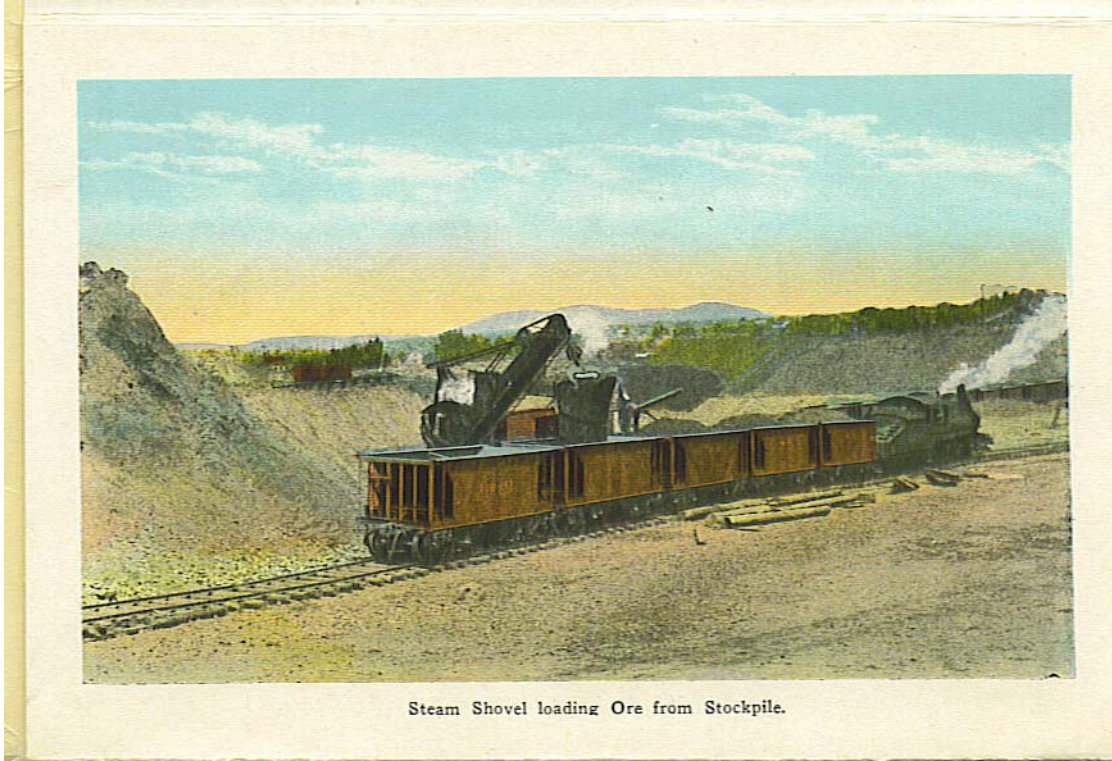
As you know I am a first generation Finnish American and I never heard my parents, relatives or their Finnish friends refer to this screening. They also didn't refer to Northern or Eastern Finns. The designation was by province such as Savolainen, Hämelainen (my father), Porilainen, and the knife fighters or Härmäläinen.

In conclusion, to base one's knowledge or lack thereof of the Finnish people on newspaper articles is hardly a valid representation of the truth. The origin and culture of Finnish people is best learned through the study of Finnish history as written by Finns, not some local newspaper reporter.



Silver St & 2nd Ave, Hurley, in 1910.  
Paul's Store, Police Kiosk.  
Mayor Henry Mead





Steam Shovel loading Ore from Stockpile.





### **Our Officers are**

**Gary Harrington, President**  
**Diane Egan, Vice President**  
**Pam Bretall, Secretary**  
**Eddie Sandene, Treasurer**  
**Carol Schleker, Membership**  
**Dwight Filippini, Cemeteries**  
**Tim Egan, Librarian**

**Our board meetings are held on the 2<sup>nd</sup> Saturday of the month  
from 10 am to noon  
Everyone is invited to attend.**